



# INDOFINE Chemical Company, Inc.

121 Stryker Lane, Bldg. 30, Suite 1 • Hillsborough, NJ 08844 • U.S.A.

Phone: (908) 359-6778 • FAX: (908) 359-1179

website: [www.indofinechemical.com](http://www.indofinechemical.com)

e-mail: [chemical@indofinechemical.com](mailto:chemical@indofinechemical.com)

## CERTIFICATE OF ANALYSIS

Catalog Number: 19-367

Product Name: **3(3'-BROMOPHENYL)-7-METHYL-4-PHENYLCOUMARIN**

Lot Number: 0012306

Chemical Formula: C<sub>22</sub>H<sub>15</sub>BrO<sub>2</sub>

Molecular Weight: 391.27

Melting Point: 203-206°C

Appearance: Off white powder

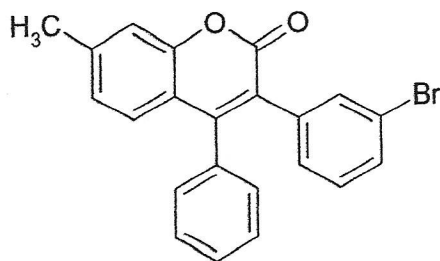
Solubility: Soluble in Chloroform

TLC: Hexane:Ethyl acetate (9:1)

NMR Spectrum: Enclosed (Confirms to the structure)

Storage: Cool dry place

Purity (HPLC): 99.08%





# INDOFINE Chemical Company, Inc.

121 Stryker Lane, Bldg. 30, Suite 1 • Hillsborough, NJ 08844 • U.S.A.

Phone: (908) 359-6778 • FAX: (908) 359-1179

website: [www.indofinechemical.com](http://www.indofinechemical.com)

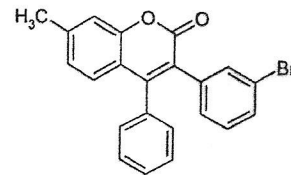
e-mail: [chemical@indofinechemical.com](mailto:chemical@indofinechemical.com)

## HPLC ANALYSIS

Acquired by : Sanjeev  
Sample Name : 3(3'-Bromophenyl)-7-methyl-4-phenylcoumarin  
Sample ID : Lot No:0012306  
Injection Volume : 20 uL  
Data Filename : 290813D.lcd  
Method Filename : Linear Isocratic.M.lcm

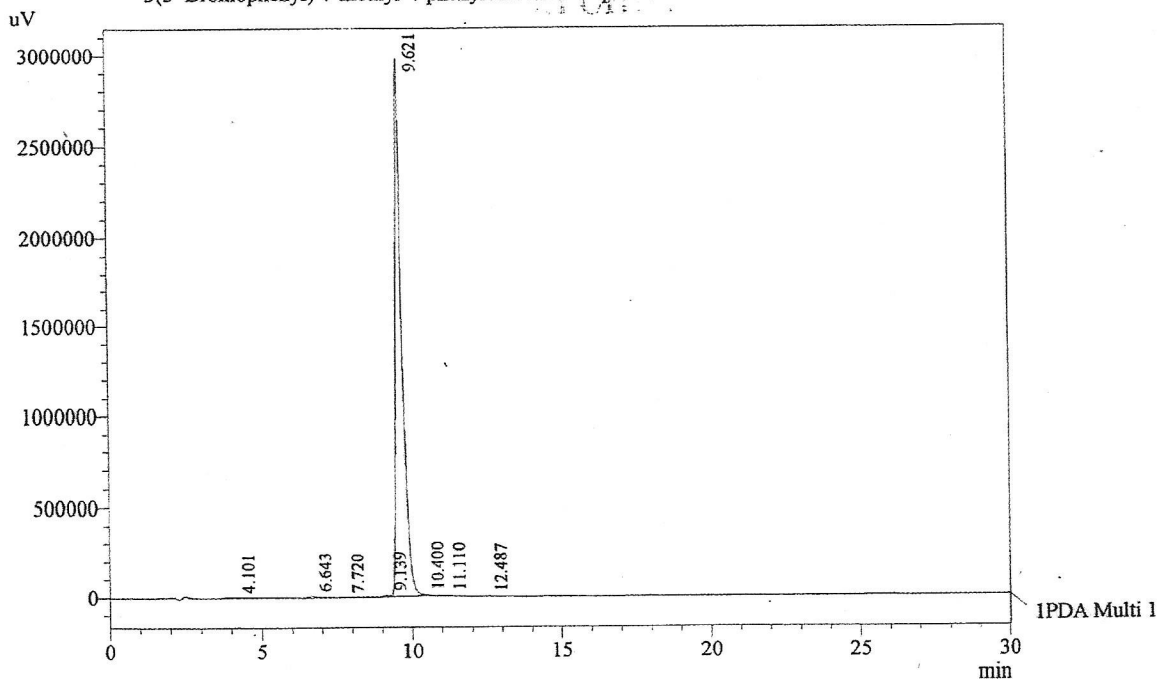
Catalog No.: 19-367  
Product Name: 3(3'-Bromophenyl)-7-methyl-4-phenylcoumarin  
Lot No.: 0012306

Column : LUNA C-18(2), (250mm x4.6mm 5.0µ)  
Flow : 1.000 mL/min.  
Mobile Phase : A(20% of 0.05% TFA in water) B(80% of Acetonitrile)  
Diluent : Acetonitrile



Chromatogram

3(3'-Bromophenyl)-7-methyl-4-phenylcoumarin D:\promonence\Data\2013\AUG-2013\290813D.lcd



1 PDA Multi 1 / 220nm 4nm

PeakTable

PDA Ch1 220nm 4nm

Peak#	Name	Ret. Time	Area	Area %	Relative Retention Time
1	RT:4.101	4.101	21401	0.05	0.43
2	RT:6.643	6.643	110174	0.24	0.69
3	RT:7.720	7.720	19104	0.04	0.80
4	RT:9.139	9.139	128979	0.28	0.95
5	RT:9.621	9.621	45005153	99.08	1.00
6	RT:10.400	10.400	65672	0.14	1.08
7	RT:11.110	11.110	46980	0.10	1.15
8	RT:12.487	12.487	25998	0.06	1.30
Total			45423460	100.00	

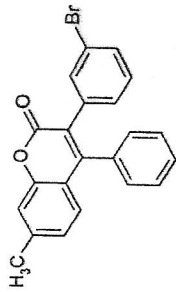


INDOFINE Chemical Company, Inc.  
 121 STRYKER LANE  
 BLDG. 30, SUITE 1  
 HILLSBOROUGH, NJ 08844

Catalog No.: 19-367

Product Name: 3-(3'-Bromophenyl)-7-methyl-4-phenylcoumarin

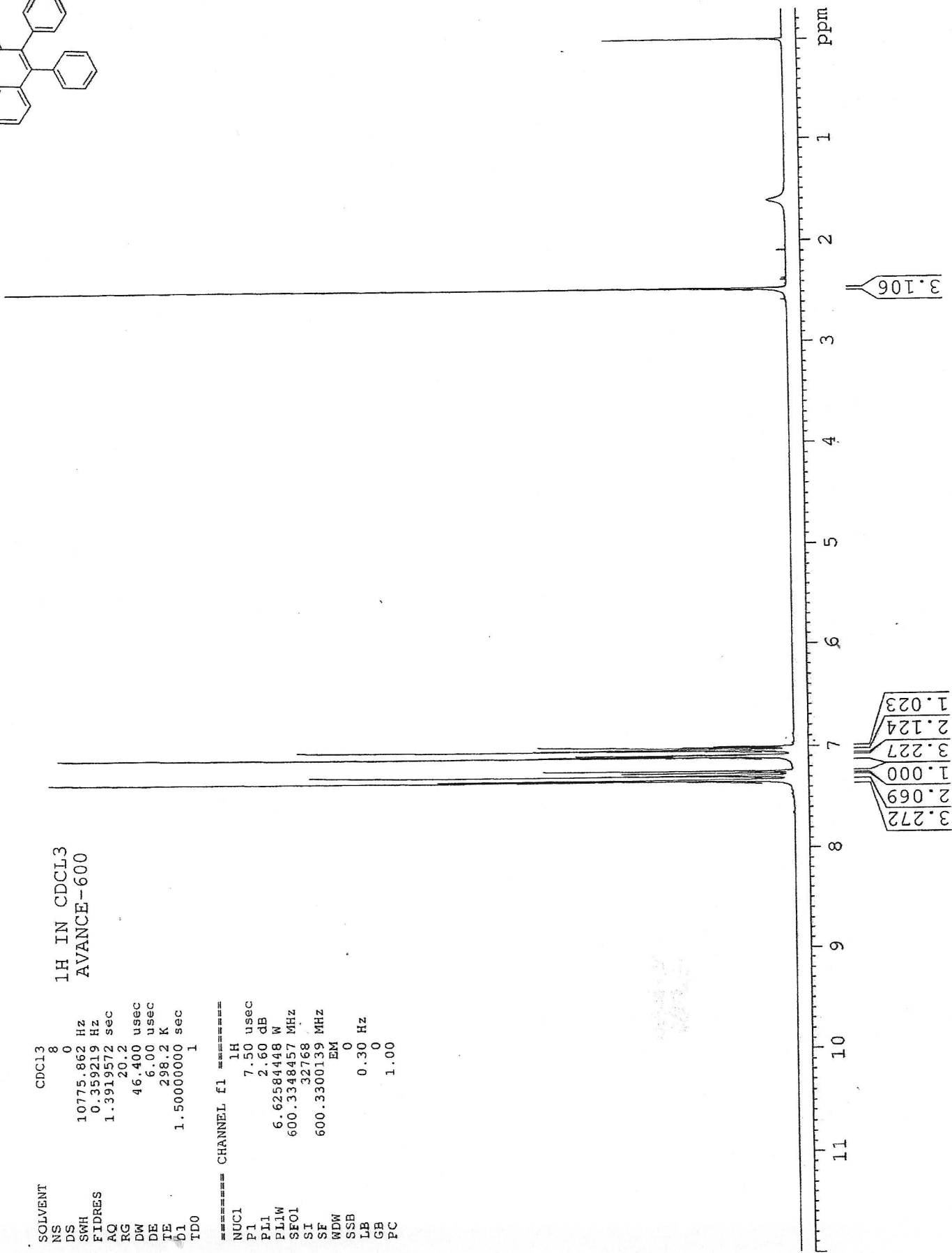
Lot No.: 0012306



SOLVENT CDCL3 8  
 NS 0  
 DS 10775.862 Hz  
 SWH 0.359219 Hz  
 FIDRES 1.3919572 sec  
 AQ 20.2  
 RG 46.400 usec  
 DW 6.00 usec  
 DE 298.2 K  
 TE 1.50000000 sec  
 O1 1  
 TDO 1

1H IN CDCL3  
 AVANCE-600

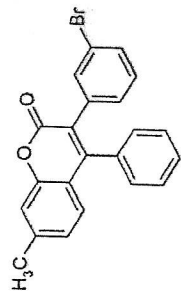
===== CHANNEL f1 1H =====  
 NUC1 1H  
 P1 7.50 usec  
 PL1 2.60 dB  
 PL1W 6.62584448 W  
 SF01 600.3348457 MHz  
 SI 32768  
 SF 600.3300139 MHz  
 WDW EM  
 SSB 0  
 LB 0.30 Hz  
 GB 0  
 PC 1.00





INDOFINE Chemical Company, inc.  
 121 STRYKER LANE  
 BLDG. 30, SUITE 1  
 HILLSBOROUGH, NJ 08844

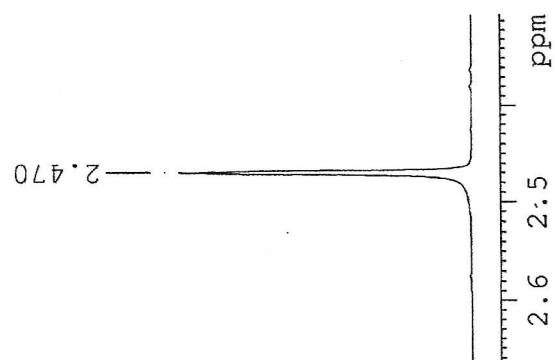
Catalog No.: 19-367  
 Product Name: 3-(3'-Bromophenyl)-7-methyl-4-phenylcoumarin  
 Lot No.: 0012306



SOLVENT CDCL3  
 NS 8  
 DS 0  
 SWH 10775.862 Hz  
 FIDRES 0.359219 Hz  
 AQ 1.3919572 sec  
 RG 20.2  
 DW 46.400 usec  
 DE 6.00 usec  
 TE 298.2 K  
 D1 1.50000000 sec  
 TD0 1

1H IN CDCL3  
 AVANCI-600

===== CHANNEL f1 =====  
 NUC1 1H  
 P1 7.50 usec  
 PL1 2.60 dB  
 PL1W 6.62584448 W  
 SF01 600.3348457 MHz  
 SI 32768  
 SF 600.3300139 MHz  
 WDW EM  
 SSB 0  
 LB 0.30 Hz  
 GB 0  
 PC 1.00



7.349  
7.347  
7.343  
7.342  
7.336  
7.332  
7.326  
7.301  
7.298  
7.295  
7.292  
7.285  
7.282  
7.262  
7.241  
7.123  
7.115  
7.111  
7.109  
7.106  
7.103  
7.099  
7.093  
7.049  
7.046  
7.043  
7.040  
7.038  
7.019  
7.017  
7.005  
7.004

